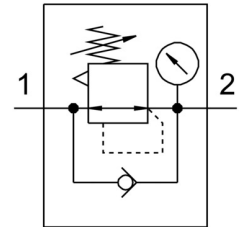


Pressure regulator VRPA-CM-T14-E

Part number: 8086006

FESTO



Data sheet

Feature	Value
Type code	VRPA
Controller function	Outlet pressure constant With secondary exhausting With return flow function
Pneumatic connection 1	QS-1/4
Pneumatic connection 2	QS-1/4
Type of mounting	With through-hole
Standard nominal flow rate	95 l/min
Ambient temperature	0 °C ... 60 °C
Housing material	PBT
Operating medium	Compressed air as per ISO 8573-1:2010 [7:4:4]
Mounting position	Any
Actuation type	Manual
Adjusting element	Rotary knob with detent
Symbol	00991558
Pressure gauge	with pressure gauge
Pressure regulation range	1 bar ... 7.998 bar
Information on operating and pilot media	Operation with oil lubrication possible (required for further use)
Product weight	23 g
Note on materials	RoHS-compliant
Static seal material	NBR